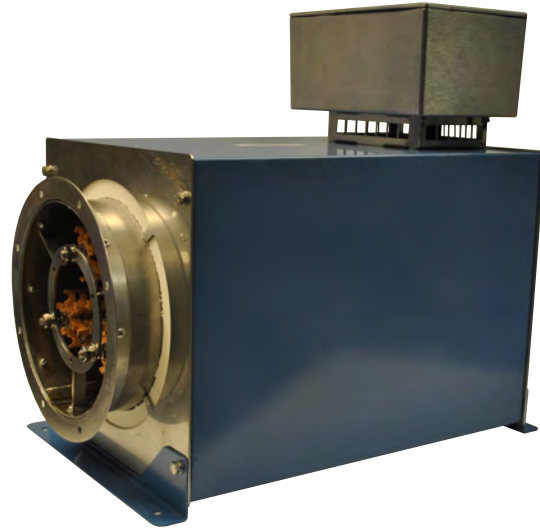


INSTANT HEAT FOR DIRECT DRIVE AND HIGH VELOCITY FANS

- Up To 300 °C Peak Outlet Temperature
- Output 24 to 36 kW
- Single Or Three Phase
- No Maintenance
- Stainless Steel Casing with *Cool Touch* Insulated Outer Jacket
- Aluminium Terminal Box
- Temperature Controls Available
- Compatible with Fan and Blower Range
- UL Approved

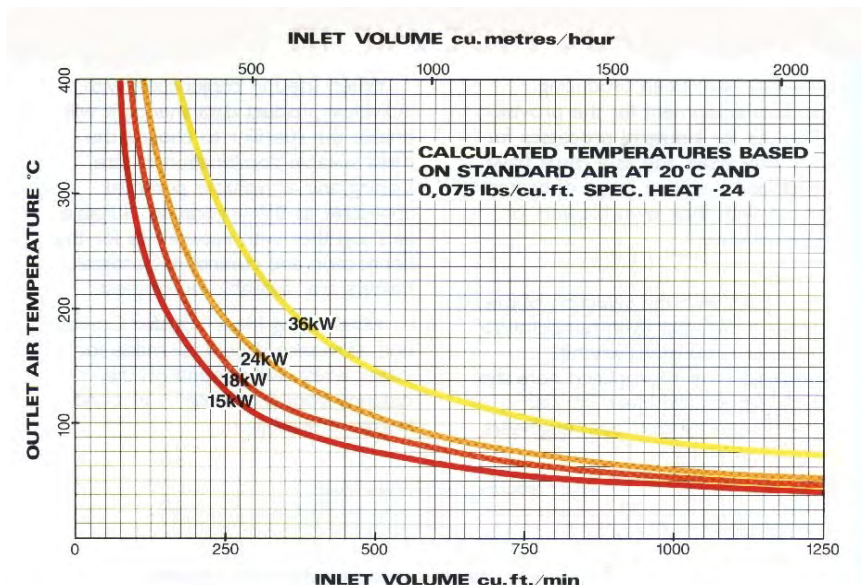


Product supplied may differ from image based on requested requirements. Image represents Model 688 Process Heater (casing / element).

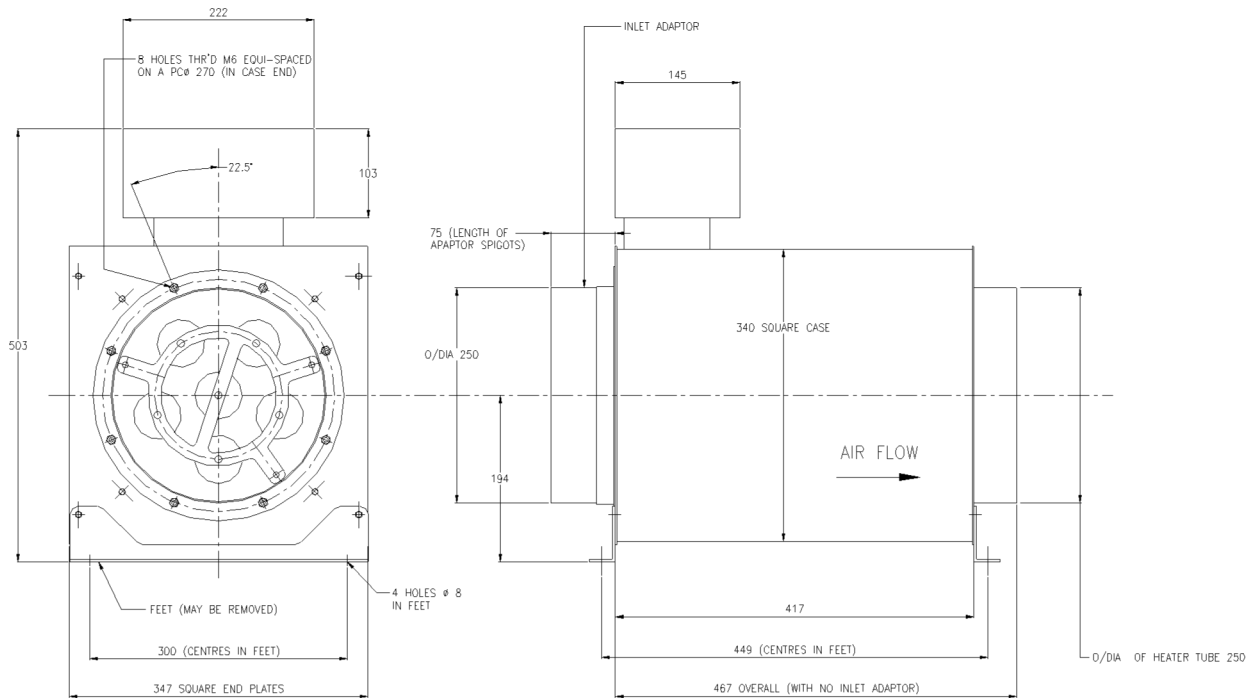
| Electrical |
|---|
| 415 V - 380 V - 3 Phase |
| 220 V - 240 V - 1 Phase |
| Other Voltages Available with Limited Loading |

| Maximum Outlet Temperature: 300°C |
|---|
| Resistance to Airflow (approx.) |
| 0.22" w.g. at 200 ft ³ p/min |
| 3.50" w.g. at 800 ft ³ p/min |
| 10.80" w.g. at 1400 ft ³ p/min |

PERFORMANCE CURVE



DIMENSIONAL DRAWING: Model 688



All dimensions in mm