

## INSTANT HEAT FOR DIRECT DRIVE AND HIGH VELOCITY FANS

- Up To 300 °C Peak Outlet Temperature
- Output 9 to 24 kW
- Single Or Three Phase
- No Maintenance
- Stainless Steel Casing with *Cool Touch* Insulated Outer Jacket
- Aluminium Terminal Box
- Temperature Controls Available
- Compatible with Fan and Blower Range
- UL Approved

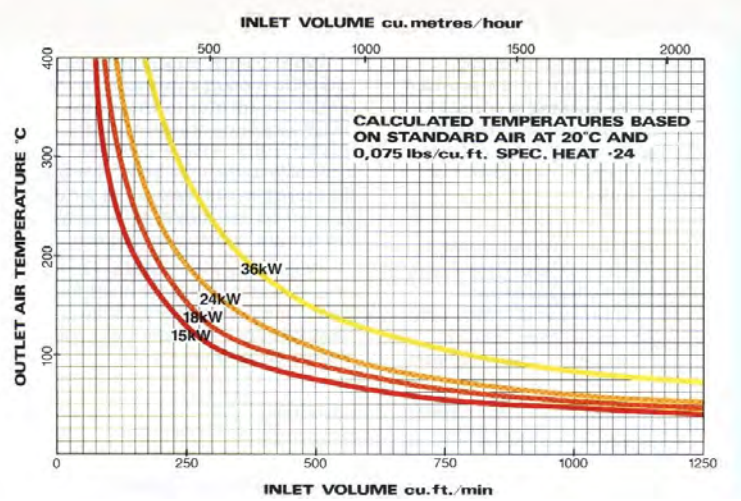
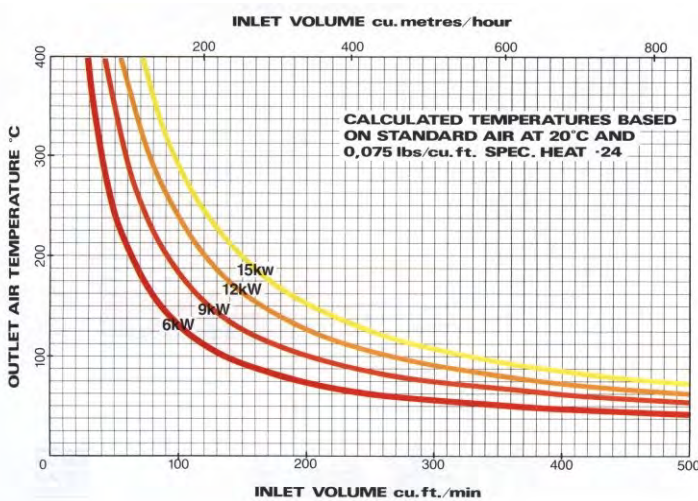


Product supplied may differ from image based on requested requirements. Image represents Model 648 Process Heater (casing / element).

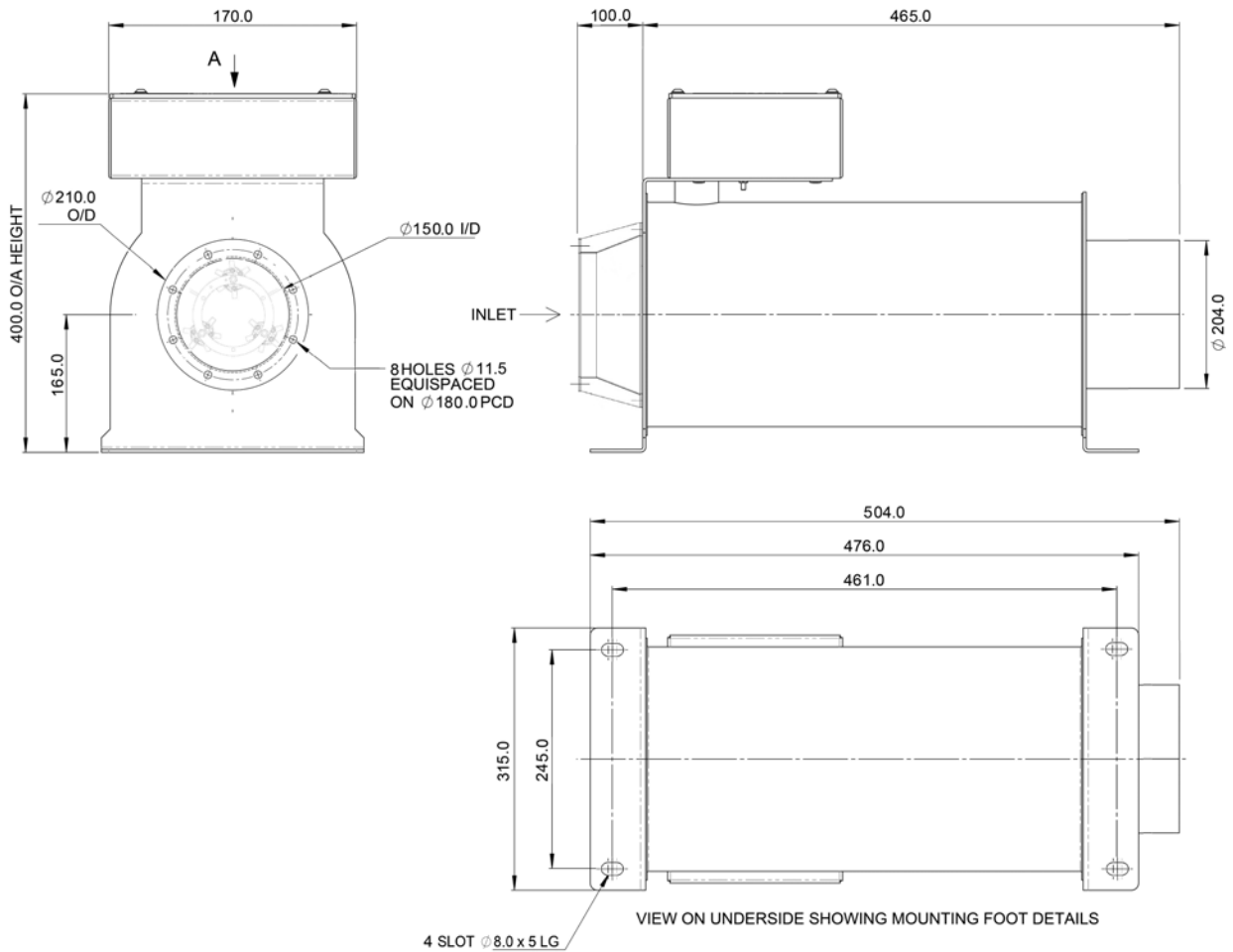
Electrical
415 V - 380 V - 3 Phase
220 V - 240 V - 1 Phase
Other Voltages Available with Limited Loading

Maximum Outlet Temperature: 300°C
Resistance to Airflow (approx.)
0.22" w.g. at 200 ft <sup>3</sup> p/min
3.50" w.g. at 800 ft <sup>3</sup> p/min
10.80" w.g. at 1400 ft <sup>3</sup> p/min

## PERFORMANCE CURVE



DIMENSIONAL DRAWING: Model 648



All dimensions in mm